

What are you like?

Activity 1

A Pair work Look at these pictures. Where are the people? What are they doing?



"They're at an amusement park. They're laughing and having fun."

B Pair work Describe the places in part A. Which kinds of places do you like the most? the least? Use these words and your own ideas.

busy	crowded	exciting	peaceful	relaxing
calm	dull	noisy	quiet	solitary

"The amusement park is busy and noisy. I like calm, quiet places the most."

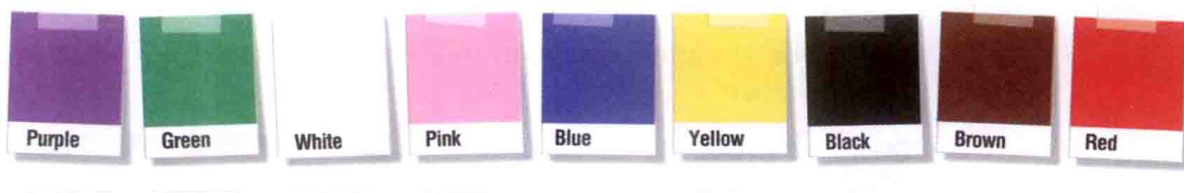
C Join another pair Discuss these questions.

- What is your favorite place?
- Why do you like it?
- What does this say about your personality?

"My favorite place is a coffee shop near school. I love to go there with my friends."

Activity 2

A Work alone Rank these colors from 1 (your favorite) to 9 (your least favorite). Then compare with a partner.



B Pair work Can you guess what these colors say about your personality? Write the colors next to the statements.

What Do These Colors Say About Your Personality?

green
white
purple
pink
blue
red
black
brown
yellow

blue You like fresh air, the outdoors, and cold weather.

 You love things to be neat and clean, and you always plan ahead.

 You are happy and friendly, and you love being in the sun.

 You have a quick temper and strong feelings.

 You like to be alone and "do your own thing."

You love to laugh and don't take things too seriously.

 You care about the environment and love animals.

 You like to tell people what to do and be in charge.

 You love to discuss serious things and are very intelligent.

C Listen Did you guess correctly?

D Group work Discuss these questions.

- Is the statement about your favorite color true for you?
- Is the statement about your least favorite color false for you?
- What do you think about this personality analysis? Is it accurate or inaccurate?

"My favorite color is blue. I like fresh air and the outdoors, but I hate cold weather."

Activity 3

Communication task Work in pairs. One of you should look at Task 2 on page 76, and the other at Task 22 on page 84. You're going to ask each other about your habits and personal qualities.

Breaking the ice

Activity 1

A Pair work Imagine you want to meet Jenny or Greg. What would you say to "break the ice"?



Jenny



Greg

"I'd say, 'Is anyone sitting here?'"

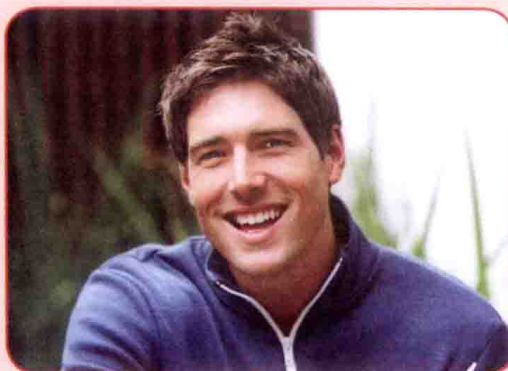
"You could also say, 'Is this seat taken?'"

B Listen Annie is speaking to Jenny, and Tony is speaking to Greg. Check (✓) the icebreakers they use.



Annie

- ☐ Is anyone sitting here?
- ☐ Is this seat taken?
- ☐ Where are you traveling to?



Tony


- ☐ Is the coffee good?
- ☐ How's the coffee here?
- ☐ What are you reading?

C Pair work Discuss these questions.

- Do you usually start conversations or wait for others to talk to you?
- Is it easy or difficult for you to talk to strangers?
- Where are you most likely to start conversations?

"I usually wait for others to talk to me. I guess I'm kind of shy."

"I usually start conversations. I'm a talkative person!"

- D Listen**  First, guess Annie's and Tony's questions. Then listen to their conversations. Check your guesses.

Annie's questions

What's _____?
Where did _____?
What were _____?
Who was _____?

Jenny's answers

Jenny.
Lincoln High School.
English and geography.
Mrs. Green. She was the best!

Tony's questions

What's _____?
What are _____?
When will _____?
What will _____?

Greg's answers

Greg.
A history book.
Next year.
Maybe teach history. I don't know.

Activity 2

- A Pair work** Check (✓) the icebreakers you'd say to someone you are meeting for the first time. Write an **X** next to the icebreakers you'd never say.

	Someone your age		Someone much older	
	male	female	male	female
How are you doing?	<input type="checkbox"/>	<input type="checkbox"/>	<input type="checkbox"/>	<input type="checkbox"/>
Are you married?	<input type="checkbox"/>	<input type="checkbox"/>	<input type="checkbox"/>	<input type="checkbox"/>
I love your jacket.	<input type="checkbox"/>	<input type="checkbox"/>	<input type="checkbox"/>	<input type="checkbox"/>
What do you do for a living?	<input type="checkbox"/>	<input type="checkbox"/>	<input type="checkbox"/>	<input type="checkbox"/>
We haven't met. My name's . . .	<input type="checkbox"/>	<input type="checkbox"/>	<input type="checkbox"/>	<input type="checkbox"/>

- B Join another pair** How is your choice of icebreaker different for a male or female? for someone your age or someone much older?

"I wouldn't say 'How are you doing?' to someone much older. It's a little too informal."

Activity 3

- A Pair work** Imagine you're meeting for the first time. Start a conversation. Use these expressions to keep the conversation going.

Really? Why is that? How come? That's interesting. What do you mean?

"What are you listening to?"

"Hip-hop. It's my favorite kind of music."

"That's interesting. It's my favorite, too. Who's your favorite singer?"

- B Communication task** Work in groups of three. One of you should look at Task 3 on page 77, another at Task 20 on page 83, and another at Task 23 on page 85. You're going to find out more about the students in your class.

Self-study

For extra grammar, listening, and vocabulary practice, go to pages 94–95.

Activity 1

A Pair work These people are meeting for the first time. Are they making good first impressions?



"The people in the first picture are making a good first impression."

"I agree. They're smiling, and they look very friendly."

B Pair work Imagine you're meeting someone your age for the first time. Check (✓) the things you usually do. Write an X next to the things you never do.

☐ shake hands

☐ touch the person on the arm

☐ bow

☐ look at the person directly

☐ hug

☐ look away from the person

☐ kiss the person on the cheek

☐ offer the person something to drink

☐ smile and say "Hi"

☐ offer the person something to eat

☐ stand very close

☐ if sitting, stand up

☐ exchange business cards

☐ if sitting, offer the person a seat

"I guess I usually shake hands. What about you?"

"It depends. I sometimes shake hands, and sometimes I smile and say 'Hi.'"

C Join another pair Compare your answers. Then discuss these questions.

- Are your answers different if the person is older than you? younger than you?
- How do you say good-bye to someone you've just met?

"If the person is older, I always stand up."

"If the person is younger, I usually don't shake hands. I just say 'Hi.'"